



the **play inspection** company
the safest hands around playgrounds

Annual Inspection

Mid Suffolk District Council

Beyton

The Green, Suffolk, IP30 9AF



Unit 5 Glenmore Business Park, Blackhill Road, Poole, Dorset, BH16 6NL
t - 01202 590675 f - 0870 428 3942 e - info@playinspections.co.uk

www.playinspections.co.uk

Powered by:

**the play ►
inspection app**
by the play inspection company

Risk Assessment Matrix

Probability>>	5	Very High	VL	L	M	H	VH
	4	High	VL	L	M	H	H
	3	Moderate	VL	L	L	M	M
	2	Low	VL	L	L	L	L
	1	Very Low	VL	VL	VL	VL	VL
			Very Low	Low	Moderate	High	Very High
			1	2	3	4	5

Severity>>

Probability Score	Probability of Occurrence
1 – Very Low	No significant probability; lightning Strike
2 – Low	Minimal probability of occurrence. Requires significant factor or combination of factors to take place. Significant increase in intensity of use.
3 – Moderate	Moderate probability. An added factor is needed to cause an accident. Designed use is unlikely to be problematic, additional factor is required. Covers or guards loose, removed or vandalised. Absent guard rail or barrier at high levels
4 – High	High probability. Accident is probable without any added factor. Glass contaminant in loose fill surface. Exposed sharp edges on equipment.
5 – Very High	Very High probability. If the situation is not addressed an accident is almost certain. Severely worn chains/shackles. Severely damaged surfacing within impact area

Severity Score	Severity of injury
1 – Very Low	No injury likely e.g. damaged or soiled clothing, minor bruising
2 – Low	Minor injury – Laceration or bruising requiring first aid only
3 – Moderate	Injury requiring medical intervention e.g. laceration requiring stitches, sprain, fracture of small bones of hand or foot.
4 – High	Serious injury including hospitalisation for observation e.g. concussion, fracture of long bones of leg/arm, back/neck injuries, fractured skull.
5 – Very High	Severe injury involving the potential for permanent disability e.g. amputation, loss of sight, spinal injury, fatality.

NB: When we inspect we only see a snapshot of the current condition of the equipment. It is the operator's responsibility to ensure that there is a continuing level of maintenance to keep the equipment in good working order and the site fit for use.

BS EN 1176:2008 Parts 1-11 (Playground equipment and surfacing)
BS EN 14974 (Facilities for users of roller sports equipment)
BS EN 15312 (Free access multi-sports equipment)
BS 10075 (Specification for Parkour Equipment)

Site Information

Inspection Ref: 273812

Site Ref: 16528

Customer Order No: None

Annual Inspection - 01 August 2016 at 17:29 Inspector: Alan Lingley RPII Annual Inspector

Risk Assessment: **9 - Low Risk**



Location: The site is located in an area of public open space and is overlooked by a number of properties in the local community.

Disabled Access: Generally accessible; an area accessible to most but not all people even when help is at hand.



3 - Very Low Risk

Item: Ancillary Items - Sign
Manufacturer: Unknown
Surface Type: N/A
Equipment Compliance: N/A
Surface Area Compliance: N/A
Ref/Part Number:
Total Findings: 1



Finding 1

This item is satisfactory - no work required



8 - Low Risk

Item: Ancillary Items - Bench
Manufacturer: Owner/Operator
Surface Type: N/A
Equipment Compliance: N/A
Surface Area Compliance: N/A
Ref/Part Number:
Total Findings: 2



Finding 1

A timber rail is damaged - Replace the damaged rail

Finding 2

There are areas or parts of the timber on the structure that have rotted - Replace all affected timbers



4 - Very Low Risk

Item: Ancillary Items - Picnic Table
Manufacturer: Owner/Operator
Surface Type: N/A
Equipment Compliance: N/A
Surface Area Compliance: N/A
Ref/Part Number:
Total Findings: 1



Finding 1

This item is satisfactory - no work required



4 - Very Low Risk

Item: Rocking Equipment - Spring Hippo
Manufacturer: S M P (Playgrounds Ltd)
Surface Type: Rubber Tiles
Equipment Compliance: No
Surface Area Compliance: Yes
Ref/Part Number:
Total Findings: 1



Finding 1

The end of handgrips and/or footrests have a cross section of less than 15cm² and fail to meet the requirements of BS EN 1176:2008 Part 6 - This is a relatively low risk failure and no remedial action is recommended



9 - Low Risk

Item: Rotor Play - Roundabout
Manufacturer: Wicksteed Playgrounds
Surface Type: Wet Pour
Equipment Compliance: No
Surface Area Compliance: Yes
Ref/Part Number:
Total Findings: 5



Finding 1

The bearing is worn - Replace the bearing as required

Finding 2

There is/are finger entrapment/s in the roundabout frame and the item fails to meet the requirements of BS EN 1176:2008 Part 1 4.2.7.6 Entrapment of fingers - Monitor use

Finding 3

The distance between the underside of the roundabout platform and the playing surface is less than 60mm and contravenes the requirements of BS EN 1176 Part 5 which requires that the distance be maintained between 60mm-110mm for the entire circumference of the roundabout - Monitor Use

Finding 4

The weld(s) on a handgrip has failed - Repair item

Finding 5

The weld(s) on a platform section have failed - Repair item



5 - Very Low Risk

Item: Other - Free Standing Slide
Manufacturer: Not Identified
Surface Type: Grass Matrix Tiles
Equipment Compliance: No
Surface Area Compliance: Yes
Ref/Part Number:
Total Findings: 2



Finding 1

The item fails to meet the requirements of BS EN 1176:2008 Part 1 4.2.7.2 head and neck entrapment in the barriers and/or steps - Monitor use

Finding 2

There is some graffiti present - Remove the graffiti



6 - Low Risk

Item: Multi Use Games Area - 5 a side Goals
Manufacturer: Not Identified
Surface Type: Grass
Equipment Compliance: N/A
Surface Area Compliance: N/A
Ref/Part Number:
Total Findings: 1



Finding 1

The surface has eroded in front of the goals - Reinstate the surface



4 - Very Low Risk

Item: Swings - 1 Bay 2 Seat (Flat)
Manufacturer: Playdale Playgrounds Ltd
Surface Type: Grass Matrix Tiles
Equipment Compliance: Yes
Surface Area Compliance: Yes
Ref/Part Number:
Total Findings: 1



Finding 1

This item is satisfactory - no work required



8 - Low Risk

Item: Rotor Play - Spinning Pole
Manufacturer: Playdale Playgrounds Ltd
Surface Type: Grass Matrix Tiles
Equipment Compliance: Yes
Surface Area Compliance: Yes
Ref/Part Number:
Total Findings: 1



Finding 1

The grass mats are silted up, the soil is compacted and the area will become very slippery when the soil is wet. - Lift and relay the mats



6 - Low Risk

Item: Activity Equipment - Climbing Frame
Manufacturer: Playdale Playgrounds Ltd
Surface Type: Grass Matrix Tiles
Equipment Compliance: Yes
Surface Area Compliance: Yes
Ref/Part Number:
Total Findings: 1



Finding 1

There is some strimmer damage apparent on the posts, this can penetrate the preservative applied to the timber and accelerate the rotting process - Monitor for any deterioration (rot) and replace as required



4 - Very Low Risk

Item: Activity Equipment - Multi Play (Toddler)
Manufacturer: Playdale Playgrounds Ltd
Surface Type: Grass Matrix Tiles
Equipment Compliance: Yes
Surface Area Compliance: Yes
Ref/Part Number:
Total Findings: 1



Finding 1

This item is satisfactory - no work required



4 - Very Low Risk

Item: Swings - 1 Bay 2 Seat (Cradle)
Manufacturer: Playdale Playgrounds Ltd
Surface Type: Grass Matrix Tiles
Equipment Compliance: Yes
Surface Area Compliance: Yes
Ref/Part Number:
Total Findings: 1



Finding 1

This item is satisfactory - no work required



6 - Low Risk

Item: Activity Equipment - Activity Trail
Manufacturer: Playdale Playgrounds Ltd
Surface Type: Grass Matrix Tiles
Equipment Compliance: Yes
Surface Area Compliance: Yes
Ref/Part Number:
Total Findings: 1



Finding 1

There is some strimmer damage apparent on the posts, this can penetrate the preservative applied to the timber and accelerate the rotting process - Monitor for any deterioration (rot) and replace as required

Findings Information

 8 - Low Risk (Finding 1)			
Item:	Ancillary Items - Bench	Risk Level:	L - Low Risk
Manufacturer:	Owner/Operator	Surface:	N/A
			
Finding:	A timber rail is damaged		Action: Replace the damaged rail

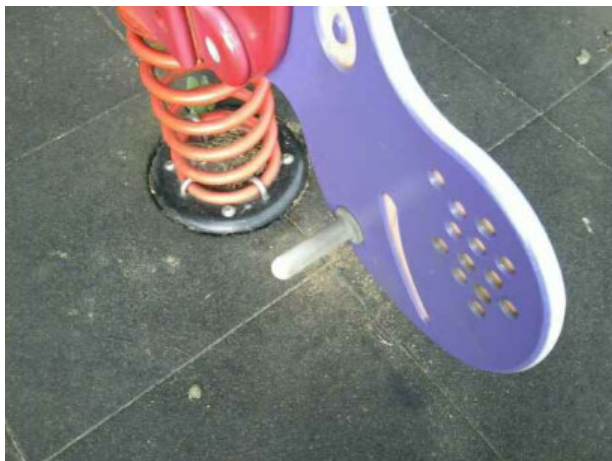
 8 - Low Risk (Finding 2)			
Item:	Ancillary Items - Bench	Risk Level:	L - Low Risk
Manufacturer:	Owner/Operator	Surface:	N/A
			
Finding:	There are areas or parts of the timber on the structure that have rotted		Action: Replace all affected timbers



4 - Very Low Risk (Finding 1)

Item: Rocking Equipment - Spring Hippo
Manufacturer: S M P (Playgrounds Ltd)

Risk Level: V - Very Low Risk
Surface: Rubber Tiles



Finding: The end of handgrips and/or footrests have a cross section of less than 15cm² and fail to meet the requirements of BS EN 1176:2008 Part 6

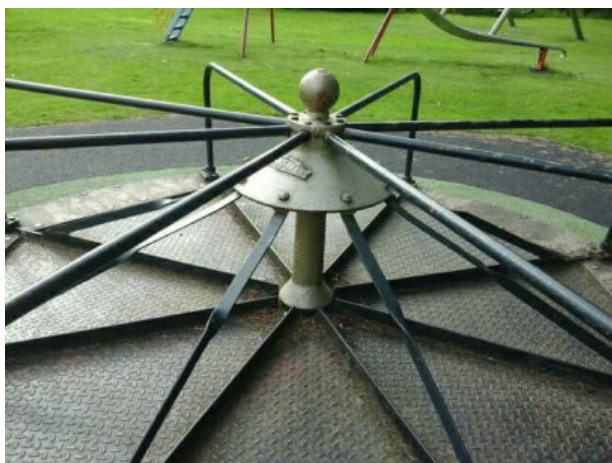
Action: This is a relatively low risk failure and no remedial action is recommended



6 - Low Risk (Finding 1)

Item: Rotor Play - Roundabout
Manufacturer: Wicksteed Playgrounds

Risk Level: L - Low Risk
Surface: Wet Pour



Finding: The bearing is worn

Action: Replace the bearing as required



5 - Very Low Risk (Finding 2)

Item: Rotor Play - Roundabout
Manufacturer: Wicksteed Playgrounds

Risk Level: V - Very Low Risk
Surface: Wet Pour



Finding: There is/are finger entrapment/s in the roundabout frame and the item fails to meet the requirements of BS EN 1176:2008 Part 1 4.2.7.6 Entrapment of fingers

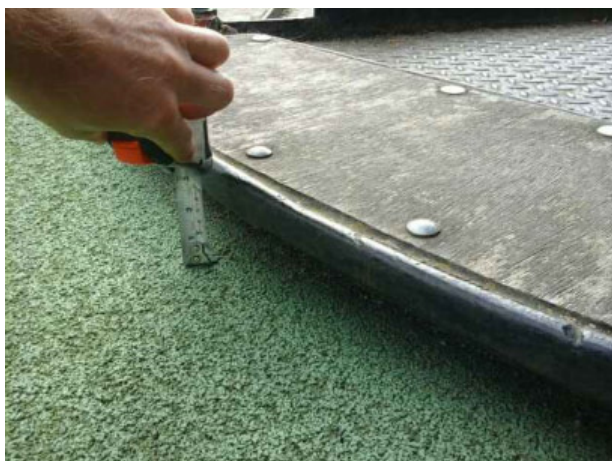
Action: Monitor use



6 - Low Risk (Finding 3)

Item: Rotor Play - Roundabout
Manufacturer: Wicksteed Playgrounds

Risk Level: L - Low Risk
Surface: Wet Pour



Finding: The distance between the underside of the roundabout platform and the playing surface is less than 60mm and contravenes the requirements of BS EN 1176 Part 5 which requires that the distance be maintained between 60mm-110mm for the entire circumference of the roundabout

Action: Monitor Use



8 - Low Risk (Finding 4)

Item: Rotor Play - Roundabout
Manufacturer: Wicksteed Playgrounds

Risk Level: L - Low Risk
Surface: Wet Pour



Finding: The weld(s) on a handgrip has failed

Action: Repair item



9 - Low Risk (Finding 5)

Item: Rotor Play - Roundabout
Manufacturer: Wicksteed Playgrounds

Risk Level: L - Low Risk
Surface: Wet Pour



Finding: The weld(s) on a platform section have failed

Action: Repair item



5 - Very Low Risk (Finding 1)

Item: Other - Free Standing Slide
Manufacturer: Not Identified

Risk Level: V - Very Low Risk
Surface: Grass Matrix Tiles



Finding: The item fails to meet the requirements of BS EN 1176:2008 Part 1 4.2.7.2 head and neck entrapment in the barriers and/or steps

Action: Monitor use



2 - Very Low Risk (Finding 2)

Item: Other - Free Standing Slide
Manufacturer: Not Identified

Risk Level: V - Very Low Risk
Surface: Grass Matrix Tiles



Finding: There is some graffiti present

Action: Remove the graffiti



6 - Low Risk (Finding 1)

Item: Multi Use Games Area - 5 a side Goals **Risk Level:** L - Low Risk
Manufacturer: Not Identified **Surface:** Grass



Finding: The surface has eroded in front of the goals **Action:** Reinstate the surface



8 - Low Risk (Finding 1)

Item: Rotor Play - Spinning Pole **Risk Level:** L - Low Risk
Manufacturer: Playdale Playgrounds Ltd **Surface:** Grass Matrix Tiles



Finding: The grass mats are silted up, the soil is compacted and the area will become very slippery when the soil is wet. **Action:** Lift and relay the mats



6 - Low Risk (Finding 1)

Item: Activity Equipment - Climbing Frame
Manufacturer: Playdale Playgrounds Ltd

Risk Level: L - Low Risk
Surface: Grass Matrix Tiles



Finding: There is some strimmer damage apparent on the posts, this can penetrate the preservative applied to the timber and accelerate the rotting process

Action: Monitor for any deterioration (rot) and replace as required



6 - Low Risk (Finding 1)

Item: Activity Equipment - Activity Trail
Manufacturer: Playdale Playgrounds Ltd

Risk Level: L - Low Risk
Surface: Grass Matrix Tiles



Finding: There is some strimmer damage apparent on the posts, this can penetrate the preservative applied to the timber and accelerate the rotting process

Action: Monitor for any deterioration (rot) and replace as required