

Beyton Village News

FEBRUARY - MARCH 2025



<https://beyton.suffolk.cloud>



To view online scan here

Dates for your Diaries 2025

Beyton Parish Council Meetings 2025

4th February 2025

1st April 2025

4th March 2025

Parish Council meetings

Will usually take place on the first Tuesday of the month, starting at **7.30pm** unless stated otherwise.

If you would like to make written representation rather than attending in person, please send an email or write to the Parish Clerk to be received no later than 7 days from the date of the meeting.

Meetings are open to the press and public and there is a section of the meeting where residents are invited to raise questions or make comments; although there is no requirement of the Council to answer any questions at the meeting, Councillors will take account of the balance of views expressed when they are deliberating matters during the remainder of the meeting.

Knit & Natter

10am – 12 Church Vestry

Monday 3rd Feb

Tuesday 18th March

Thursday 20th Feb

Monday 7th April

Monday 3rd March

Wednesday 23rd April

White Horse Charity Quiz

Wednesday 5th Feb

6:30pm The White Horse

BVA AGM

Wednesday 12th Feb

7:30pm The White Horse

Clean Up Beyton

Saturday 22nd March

10am Old Bus Shelter

Beyton Quiz

Friday 28th March

7pm Beyton Sixth Campus

Village Walk

Sunday 13th April

10am Details in next Magazine

Beyton Open Gardens & Supercar Event

Saturday 24th May

Deadline for next edition:

Friday

14th March 2025

Please let us have any contributions by the above date at the latest for consideration for the next edition. Please send to: editor@beytonvillage.news
Letters welcome.

Chairman: Graham Jones

chairman@beyton-pc.gov.uk

Vice Chair: Ann Alderton

ann.alderton@beyton-pc.gov.uk

Councillor: Peggy Orsler

peggy.orsler@beyton-pc.gov.uk

Councillor: John Clark

john.clark@beyton-pc.gov.uk

Councillor: Helena Harris

helena.harris@beyton-pc.gov.uk

Councillor: Jonathan Wilson

Jonathan.wilson@beyton-pc.gov.uk

Councillor: Kerry Mason

kerry.mason@beyton-pc.gov.uk

Parish Clerk: Claire Usher

parishclerk@beyton-pc.gov.uk

Editor's Welcome

Hello, Happy New Year and welcome to the first Village News of 2025.

The list of activities in the village for the year is looking pretty strong already with something to get involved with every month.

Thank you to everyone who contributes to the magazine, a good variety of content keeps it interesting and relevant. If you have anything that you'd like to have included please send to editor@beytonvillage.news.

Editor

Beyton Parish Council Chairman's report

Flooding:

Finally, we have made some real progress to address flooding in Beyton.

I can tell you that dealing with so many different stakeholders was, on the one hand a logistical challenge but on the other a pleasure working with helpful landowners, government departments and contractors.

The Beyton stream from the north of The Green to Pepper Lane, Thurston is now nearly free of obstructions and has a reasonable fall to allow water to flow. There remains a stretch between the A14 culvert and the caravan park that still needs to be cleared. This is the subject of an agreement between the landowner and National Highways and I hope there will be a decision on responsibility and very soon the essential work will be carried out.

Beyton Parish Council contributed £2,050 towards the ditch clearance, the remaining was funded by Suffolk County Council and the relevant landowners.

Geese:

Avian Flu broke out in East Anglia in December causing our geese to be housed under instruction of the Department for Environment, Food and Rural Affairs. I would like to thank Julie and Craig Jarvis for their kindness in allowing the birds to be kept in their field and also to Helena, Gareth and Jack Harris, Roy Crosby, Tony Crighton, David Knight and John Clark for constructing the enclosure and the daily feeding.

I hope that you all had an enjoyable Christmas and wish everyone a Happy New Year.

Yours

Graham Jones

Chairman, Beyton Parish Council

Beyton Environmental Group

Bird Boxes

This is not about building bird boxes, that information is readily available on many websites, the RSPB being one, it's more about the boxes that Beyton Environmental Group have around the village and the results we get from monitoring them.

Currently we have about 29 boxes, mainly on our sites, but a few in other locations in the village.

There are several types of boxes, the bulk of them being the standard tit boxes, but also 3 barn owl boxes, one of which many of you will have seen on the oak tree in Hoopers field off Church Road. There are also the 5 swift boxes on the church, plus some experimental larger boxes, designed to accommodate birds like kestrels, stock doves etc. Additionally, there is one treecreeper box on an old Oak tree in Oak Tree pond, because we know tree creepers are present in the area but, to date, this remains unused.

One area where we have not been successful is with open boxes for robins, flycatchers etc. I think the problem here is that it is very difficult to position them in such a way that they are safe from predation by crows, magpies and squirrels. The result is that those that do get occupied invariably fail. To be successful I believe they need to be concealed in some way say in a hedge - this is still work in progress, we're trying different approaches, in the meantime robins seem to be getting on OK!

In terms of success rates, a figure of 50-65% for the tit boxes would be about right, varying from year to year within that range. These are based on figures gathered by the group when we go round them all in the winter months to clean them out and repair/replace as necessary. Although its relatively easy to identify those boxes which have been successful, it is always difficult to identify the species unless an addled egg is present, the best way is by observation in the nesting season.

The swift boxes on the church have been successful in past years, there are others on the Bear and the White Horse, we have no records for these but any observations would be welcome if you should see any activity.

Regarding the barn owl boxes, a number of members are licensed to check these during the breeding season, so that results can be fed back into the national database and, if successful, arrange for chicks to be ringed. Unfortunately, no young have been reared in the boxes since 2020. This could be due to a number of factors, such as the boxes being taken over by squirrels or stock doves or just failure by the owls to breed. We know there is a breeding

pair not too far from our sites and one hope is that the young from these take over our boxes. There have been regular sightings of barn owls in Beyton recently, so fingers crossed for this year.

So, what we have found is that having more nest boxes doesn't always mean greater levels of occupation, many birds are territorial, protecting their feeding areas but it gives them more choice. Boxes that are consistently ignored are moved. Generally, it is best to avoid placing them where they are exposed to the midday sun, as this can become too hot for the chicks to survive.

Of course, another way to help nesting birds is to provide them with thick bushy un-cut hedges until the end of the breeding season, which can be as late as the end of August, for second or third broods.

Beyton Environmental Group

Knit and Natter

Do you fancy spending a sociable morning with coffee, tea and a chat?

Our friendly Knit & Natter mornings take place in Beyton Church Vestry from 10am to 12 midday normally on the first Monday of each month. However, by popular request, we are trialling additional midweek meetings.

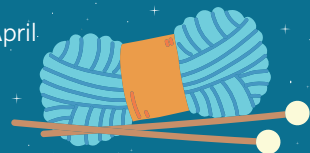
No need to book, just come along. Bring any yarn or craft project along with you or just come for a chat!

Knit & Natter mornings coming up on:

Monday 3rd February	Tuesday 18th March
Thursday 20th February	Monday 7th April
Monday 3rd March	Wednesday 23rd April

For more information, please contact:

Debbie on 01359 271314



Survey of Mobile Signal Strength in Beyton

Most of us have a mobile phone of some sort. The model we use is our choice and generally decided by how much we want to pay and what we fancy. However, it is of little value until it's connected to a network. That's where another choice has to be made, hooking up directly with one of the Big Four (Vodafone, O2, EE, Three) or going to a Mobile Virtual Network Operator (MVNO) who piggybacks onto one of the Big Four. There are many examples including the likes of Smarty, Sky Mobile, Giffgaff etc.

A major concern about the choice of network provider is the question of signal strength. It varies from place to place. In an attempt to help all residents in Beyton, a survey in the form of a questionnaire has recently been added to the village website. It simply asks you to enter your road name, your network provider and how you rate your indoor signal strength on a scale of 1-10.

To take part have a look, enter the information requested and click the submit button. The results will be published on the same page in due course. The more input we have the more accurate the results will be. Please join in, it's easy, costs nothing and may well help you and others later.

The questionnaire can be found by visiting the Beyton village website (<https://beyton.suffolk.cloud>) and going to the Contact Us page.

Thank you

Roger Brand *Webmaster*



AVAILABLE EVERY SATURDAY

Reserve your table: 01359 270324

THE WHITE HORSE

STEAK DEAL

Indulge with our steak deal.

For **£40**

Treat your Friends or the one you love for:

- Two Steaks 🥩
(cooked to specification)
- Sautéed Garlic Mushrooms 🍄
- Grilled Tomato 🍅
- Bottle of House wine (Red, White or Rosé) 🍷

BVA AGM All Beyton residents are invited to The White Horse at 7:30pm Wednesday 12th February where we will be holding our AGM.

Discussions will include the BVA Constitution which has been updated and will be adopted at this meeting.

Carol Singing We had a fantastic turnout for the carol singing on The Green on 23rd December with more than 50 people taking part. It was great to see so many people there braving the cold. We collected donations for Still Good Food, a local food bank and raised £160 which they were very pleased with.

Thanks to everyone who gave so generously.

After the singing we retired to the White Horse to warm up by the fire and enjoyed complimentary mulled wine and mince pies, courtesy of Jane and Barry.

Thanks to them for supporting the event by rewarding the singers.

Village Walks On 12th Jan we started the village walk from another village for the first time and this proved to be very popular with 19 people taking part in the walk, starting from Blackthorpe Barns.

The temperature was below freezing and the landscape was covered in frost but the sun shone so the conditions were ideal for a bracing winter walk. We also had the incentive of heading into the Roots Cafe afterwards for tea and cake!

The next village walk will be on Sunday 13th April starting at 10.00am. Put it in your diary now and watch out for further details about the start location in the next edition of the magazine.

This is a healthy and social activity and a great way of getting to know other villagers. Everyone is welcome, including accompanied children and dogs (on leads).

We are planning future walks over the summer in the evening with a stop at a local pub half way round as these were very popular last year and we are also considering doing a moonlit walk to coincide with a full/super moon.

Watch out for further details in future editions of this magazine.

Open Gardens & Supercar Event Following the success of both of these events last year we will be running them again this year on Saturday 24th May. Full details can be found on the following pages.



Super Car Event

BEYTON GREEN – SATURDAY 24TH MAY

10.00am – 2.00pm

Alongside the upcoming Open Gardens event there will also be a display of supercars on The Green.

The Green Wheels Car Collective will offer a fantastic opportunity to see a wide variety of Supercars up close and personal.

Expect to see a variety of machinery as we anticipate Ferraris, McClarens, and Porsches, all being displayed on Beyton Green.

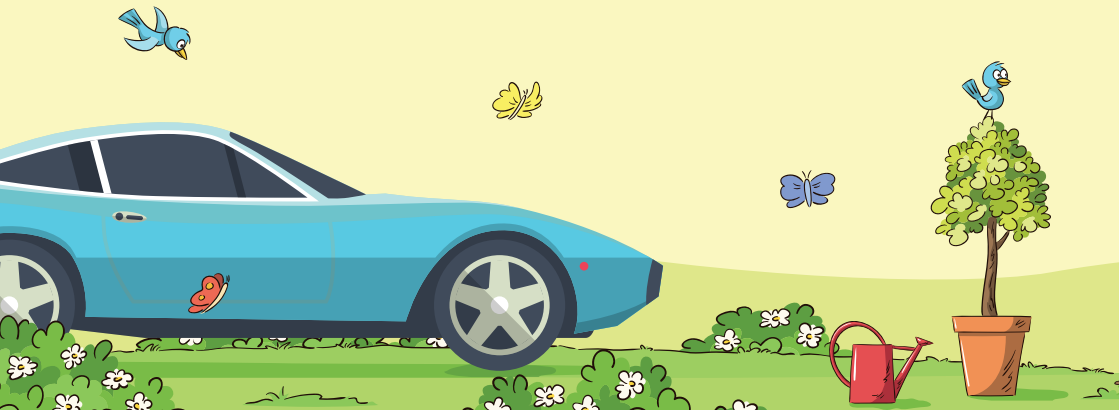
There is no charge for people coming to look at the cars. Viewing the cars is completely **FREE**.

If you have a supercar (or a classic car or motorcycle) which you would like to display please e-mail snowy1101@aol.com. The fee to display a car is £10 per driver, donations per passenger & £5 per motorbike.

Income from the car show will be used to support a local charitable cause. Further details will be published in the next edition of the magazine.

If you have a car that you'd like to display this is **FREE** to Beyton residents. If you do wish to take part with a car, please make it clear on booking that you live in Beyton although you may wish to make a donation to our fundraising in lieu of the charge.

*Why not combine visiting the Open Gardens
and the Supercar event on the same day?*



Beyton Open Gardens

SATURDAY 24TH MAY

10.00am – 4.00pm

As we publicised in the last magazine, plans for the Open Gardens and Supercar event are well underway.

All types of gardens are welcome: big or small, tidy or wildlife friendly. We would love to welcome gardens which were part of the event last year but also new gardens.

All you need is an outdoor access route to your garden to avoid visitors having to go through your house.

To open your garden to visitors please send an email to beytonvillageassociation@gmail.com

Please put **OPEN GARDENS** as the subject and make sure you include your

Name

Address

Postcode

We also require a short description of your garden, one or two sentences describing its main features, to be included in the event brochure.

Entrance to view the Open Gardens will require visitors to purchase a brochure for **£5.00** per person from a stall on The Green. (Accompanied under 16s go free).

*Catering will be available -
further details in the next magazine*





Every Autumn Term, we come together as a community to work with a local charity at a time of year where many charities are most in need of support. Gatehouse is a charity based in Bury St Edmunds who work to help those in material and emotional need in West Suffolk.

At Thurston Community College our 'reverse advent calendars' give our students a chance to focus on giving at Christmas-time. It's always a real pleasure to see our community work together to make such a generous donation to a local charity. Each tutor group collected items for the reverse advent calendar throughout November. The focus was on the receiving of gifts and so we all enjoyed the benefits of giving and sharing, in the lead up to the festive period. Many students and staff volunteered to bring items into school to create over 50 fantastic hampers. Each hamper offered both basic necessities such as tinned vegetables, pasta and rice as well as more festive luxuries such as crackers, chocolates and Christmas puddings. We know these hampers were well received by those who really needed a boost both materially and emotionally just before Christmas.

This year, a group of staff volunteers also went to the Gatehouse 'hamper room' where piles and piles of donations were there to sort into hampers, to wrap and to add those festive touches. The final check was then to ensure they were all ready for collection. This annual effort is just one of the ways in which we can remind ourselves how much our college community can affect real change when we work together with seemingly small, individual actions.



THE WHITE HORSE

Valentine's MENU

Available
6pm - 9pm

£26.50



STARTERS

Tantalising Spicy Tomato Soup

(Served with White French Baguette)

Captivating Crab Thermidor

Crabmeat in a wine, cream & cheese sauce

Sexy Seafood Cocktail

(Smoked Salmon & Prawns in Marie Rose Sauce)

Passionate Pate & Toast

(Homemade Chicken Liver Pate)

MAIN DISHES

Ravishing Rump Steak

(Plain or with Peppercorn Sauce)

Sensual Pan Fried Fillet of Salmon

(With Soy, Sesame & Ginger Sauce)

Marry Me Chicken

(Breast of chicken in a creamy sauce with Hints of Chilli)

Marvellous Spinach and Mushroom Pie

(Vegetables and Potatoes)

DESSERTS

Romantic Raspberry Pavlova

Cupid's Chocolate Torte

Seductive Syrup Sponge

Charming Cheese selection

(Cheddar, Stilton & Brie with a selection of biscuits)

Glass of Pink Sparkling Wine

The White Horse Beyton
01359 270324



Fuel Support

Find out more about the support in your area

Help to heat your home:

- **Prepayment meters** – if you are unable to top up your prepayment meter, Citizens Advice can offer you advice and may be able to refer you for charitable support. You can contact Citizens Advice Mid Suffolk on 01449 676 060.
- **Local Welfare Assistance Scheme** – This hardship grant offers help towards the cost of essentials, including energy. Visit the Suffolk County Council website and search for 'Local Welfare Assistance' for more information and to apply.
- **Surviving Winter** – if you are aged over 66 and not in receipt of Pension Credit you may be able to get extra help if you are struggling to heat your home. The scheme can help with fuel vouchers and support with alternative fuels like oil and LPG. To be eligible your income must be under £20,000 for a single person, or £24,000 for a couple. Contact Sudbury & South Suffolk Citizens Advice to apply.
- **Emergency Heating** – if you're vulnerable, and your home currently has no heating, Warm Homes Healthy People can provide free emergency heaters and help you find longer term support. Call 03456 037 686 or email whhp@eastsuffolk.gov.uk. Subject to availability, not generally available for tenants.

Bringing down your bills:

- **Warm Homes Healthy People Suffolk** – offer free efficiency assessments and advice to help you use less energy. If you are a private tenant or homeowner, they can also tell you if you are eligible for energy efficiency grants. For more information visit www.warmhomessuffolk.org or call 03456 037 686.
- **National Energy Action** – runs a Warm and Safe Homes helpline which advises on ways to reduce energy use and improve efficiency. It also offers support to switch suppliers and advice if you get behind on payments. Call 0800 304 7159 or visit www.nea.org.uk.
- **Suffolk Centres for Warmth** offer local energy and financial inclusion advice to help people stay warm and healthy in their homes. You can find out more and invite them to your local groups and community events by visiting: www.midsuffolk.gov.uk/suffolk-centres-for-warmth/www.babergh.gov.uk/suffolk-centres-for-warmth

Help for off-gas homes:

- **Oil loans** – Eastern Savings and Loan Credit Union offer interest-free loans of £500 to help spread the upfront cost of oil and LPG. To become a member and apply visit www.esluc.co.uk or call 03336 000690. Subject to a manual decision process, affordability and a credit check.

- **Oil buying clubs** – Bulk buying reduces the cost of your heating oil. Find out if your community has an oil buying club by visiting www.oil-club.co.uk, you can also check the Community Action Suffolk website for details of their scheme www.communityactionsuffolk.org.uk or call 01603 881 888.

Dealing with energy debt:

- **Supplier grants** – many energy suppliers have grants to reduce or clear debt if you meet their criteria. Speak to your energy supplier to see what help you can get.
- **Citizens Advice** – offers advice for energy, debt and more. They can support you to create a budget, negotiate with your supplier and boost your income.
- **Benefit entitlement** – payments such as Warm Homes Discount, Cold Weather Payments, and Winter Fuel Payments can add up to hundreds of pounds to help you pay your energy bills – but you'll need to be claiming certain benefits to get them. Benefit checks can be done online at www.gov.uk/benefits-calculators, or by contacting your local Citizens Advice.

More information

Visit www.midsuffolk.gov.uk/energy-fuel-and-utilities for more resources to help you keep fuel and utility costs down.

If you would prefer to speak to someone, you can contact our Customer Services team on 0300 123 4 000, option 7 to discuss your situation and find local organisations available to support you.



SAT
22
MAR

CLEAN UP BEYTON

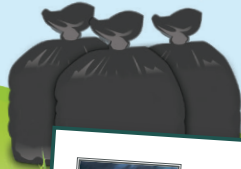
COME AND JOIN US
TO CLEAN UP **BEYTON**

Please meet 10am at the old Bus Shelter

GLOVES, LITTER PICKERS ETC PROVIDED

All help appreciated

REFRESHMENTS AFTERWARDS
FOR ALL VOLUNTEERS AT
THE WHITE HORSE



THE WHITE
HORSE

CHARITY QUIZ

Charity Quiz night on

Wednesday Feb 5th

Teams of up to 6
£2.00 per person entry

PRIZE for the winning
team and a raffle

Looking for a new home

A white Butler sink measuring 37" x 18" and 6" deep. Suitable for planting up with house leeks, sedums or alpines etc. Buyer must collect, and it is quite heavy!

Ring 01359 270785 (leave a message and your number) to arrange a viewing, and make an offer . . .

Contact Information

Beyton Village News Comments & Contributions

Email: editor@beytonvillage.news



Websites

<https://beyton.suffolk.cloud>



Facebook

Beyton Village Community
Beyton Village Association
The White Horse Beyton



Newspaper Delivery

Suffolk News Delivery Ltd – 01473 396328
info@suffolknewsdelivery.co.uk
Delivery to your door 7 days per week



Twitter

@beytontweets
@thurstoncollege



PC Clerk

Claire Usher
parishclerk@beyton-pc.gov.uk
Meadow View, Oak Farm Lane,
Mendlesham IP14 5TE

Beyton All Saints Church

The Rev'd Canon Julia Lall

Email: rector.roughambenefice@gmail.com

Mobile: 07543 824837:

The Rev'd Sarah Lock

Email: revsarah23@gmail.com

Mobile 07510 114359

Shops

Thurston – Co-Op

Tel 01359 230803

Opening hrs: Every Day 7am-10pm

Thurston – Cracknells

Tel 01359 270256

Opening hrs: Mon-Sat 7am-9pm,
Sunday 8am-9pm

Thurston – PO Londis

Tel 01359 230450

Opening hrs: Mon-Sat 6:30am-
8:30pm, Sunday 8.00am-6pm

Rougham – Meg's Farm Shop

Rougham Hall Nurseries

Tel 01359 270577

Opening hrs: Mon-Sat 9am-5pm,
Sunday 10am-4pm

Rougham – PO

Tel 01359 270201

Opening hrs: Mon-Fri 7.30am-6pm,
Sat 9am-12.30, Sun 9am-12

Garages

Beyton Garage Tel 01359 271166

Thurston Cracknells Tel 01359 270256

Pubs Restaurants

The Bear Chinese Takeaway Tel 01359 256788

The White Horse Tel 01359 270324



BOOK EARLY TO AVOID DISAPPOINTMENT

The BVA presents the annual ...

Beyton Quiz Night & Fish and Chip Supper!



Friday 28th March

In

Main Hall, Beyton 6th Form Campus

Arrive at 7pm for a prompt 7.30pm start

TICKETS: £13 A HEAD

(Booking essential by Friday 21st March)

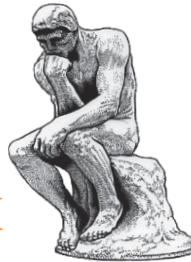


To book a table e-mail

beytonvillageassociation@gmail.com

Advance payment required by bank to bank
transfer or by another agreed method

Max team
of 6



Bring your own booze
and nibbles/desserts

Raffle

Please bring cash with you (ideally change)



www.precision.co.uk



Welcome to Precision

Deliver your message and **your products** directly into the lives of **your customers**. Powered by data, technology, and logistics, reach your perfect audience with Precision.